



Sakthi Enterprises was established in 2000. Our company is leading Importer & Exporter of Mining, Earthmoving, Marine and Construction Machineries Spares. We Import the spares from JAPAN, USA, TAIWAN, SINGAPORE, ITALY, KOREA & DUBAI almost worldwide.

Our company is undertaking All Types and Brands of Mining, Earthmoving, Marine Hydraulics, Hdd machines, Construction Machineries, Injection moulding, die moulding, Paint industries, Iron manufacturing industries, Road making machines, plat form lifters, Cement manufacturing support machines, Aluminium manufacturing power packs and big hydraulic power pack machines etc...

**ALL TYPES AND BRANDS OF HYDRAULIC COMPONENTS SERVICE, SPARES AND NEW COMPONENTS SALES
SPECIAL ATTACHMENTS FOR ALL TYPES AND BRANDS OF EARTH MOVING, CONSTRUCTION AND MARINE
MACHINERIES...**



Brands we handle... SERVICE, SPARES AND NEW COMPONENTS SALES

Danfoss, Parker, Kawasaki, Rexroth, Sundstrand, commercial hydraulics, Vickers, Eaton, continental hydraulics, Caterpillar, Komatsu, Casappa, Kappa, Trex, Poclain hydraulic, Kyb, TCM, Kalmar, Uchida, Nachi, Kato, Kobelco, Demag, Case, Nissan, Daikin, Hitachi, Hyundai, Jcb, Bauer, ajax, Doosan, P&H, Tokimak, Toyo, Bucher, Denison, JLG, Sumitomo, LIEBHERR, Sany, Linde, Char-Lynn, Vermeer, Apollo, John Deere, Kubota, Dynapac, Bomag, Yale, Clark, Palfinger, Hamm, Man Grove, Ditch Witch, Dana spicer, Bobcat, Bemt, Moog, Huga, Sinomach, Hitachi, Volvo, IR, Vickers, L&T, Harita, UDL, Carlise, FMC, ZF, Hallima, Drill Too,....



Phoenix Special Attachment is a leading manufacturer and trader of excavator attachments. Our excavator buckets are made with high strength steel (HARDOX400/NM400/WEDOX700/Q345etc) and assembled with high quality parts. We choose different materials for different working conditions. For the final consumers with competitive price, good quality and good services, is our goal.

As proud owner of Phoenix Special Attachment it is important that you keep being satisfied. Whatever type of Phoenix Special Attachment you choose, you always choose for quality and you will see that a Phoenix Special Attachment will guarantee you quality.

We offer a full range of Special Attachment for machines from 1ton to 120ton for a large variety of applications. The applications include light and general construction, road and rail construction as well as quarrying and mining industries.

We manufacture all brand and kinds of size of buckets by high-quality steel materials.

Besides Standard buckets, Heavy duty buckets, Rocky buckets and HDR bucket, we also offer special purpose buckets, such as Tilting buckets, Mud buckets, Skeleton buckets, Trenching buckets, Grab buckets, Rake, Grapple, Ripper and other attachments for you excavator.

We aim to make clients satisfied. Phoenix will guarantee product quality. You can just feel it when you are working. The Special attachments capacity fits your machine exactly, and with right materials. Our materials are wear resistant. Therefore, they last longer with the minimum maintenance costs. This means less down time for the machine and it offers you economic advantages.

Our visions :

We focus on the management belief of "Quality first, Reputation significant, Customer based".

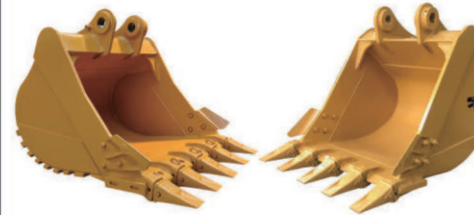
Contents

• Regular Bucket	01	• Mechanical Pulverizer	25
• Mud Bucket	03	• Hydraulic Pulverizer	26
• Skeleton Bucket	04	• Hydraulic Shear	27
• Trenching Bucket	05	• Hydraulic Tree Cutter	28
• Trapezodial Bucket	06	• Stump Shear	29
• Tilting Bucket	07	• Tree Stumper	30
• Ripper	08	• Quick Hitch	31
• Rake	09	• Hydraulic Breaker	33
• Grapple	10	• Orange Peel Grapple	35
• Grab Bucket	14	• Clamshell Bucket	36
• Rotating Screen Bucket	15	• Hydraulic Compactor	37
• Compaction Wheel	16	• Pile Hammer	38
• Ripper Bucket	18	• Excavator Magnet Lift	39
• Thumb	19	• Boom & Arm	40
• Slab Bucket	24	• Loader Attachments	42

➤ Regular Bucket

Phoenix have four types of bucket, standard bucket, heavy duty bucket, rock bucket and heavy rock bucket.

Standard Bucket



Heavy Duty Bucket



Rock Bucket



Heavy Duty Rock Bucket



We offer a full range of buckets for machines fit for your excavator, from 1t-120t. We manufacture all brand and kinds of size of buckets by high-quality steel materials, and obtain the integrated quality controlling procedure for welding, so that the hardness of the structure, using capability and quality can be ensured.

DETAILS



► Regular Bucket

Regular Bucket			
Type	Description	Characteristic	Application
Standard bucket	Standard thickness plate and high quality parts(teeth, adaptor and side cutters).	The tapered design increases the depth of bucket, creating more efficient loading capacity. And during work, the side cutters on each side could do a well job in protection of the frame.	For normal digging and loading activities of clay, sand or other loose materials with little or no debris or large rocks, optimal shape guarantees excellent digging properties and large capacity.
Heavy duty bucket	Thicker thickness plate and higher quality parts(teeth, adaptor and side cutters). Add reinforced plates on the bottom, put one more protective plates on the both side.	Thicker wear plates function better than general ones for longer using term.	Stronger than the GP backhoe bucket for heavier digging and spading in hard and slightly rocky soil. Suitable for paving, tarmac, light breaking up and demolition activities Robust version and resistant to high breakout forces.
Rock bucket	Thicker thickness plate and higher quality parts(teeth, adaptor, side cutters, teeth shroud and flanges). Add reinforced plates on the bottom, add reinforced lines in the front of bucket, put one more protective plates on the both side.	Material with higher quality (NM 400, for example) can be customized according to requirements to maintain longer using term and strong bearing capacity.	Rock buckets could bear heavier works, such as mining hard gravel mixed with hard soil, sub-hard stone or flint come after blasting, loading and heavy-loading.
Heavy Duty Rock Bucket	Heavy duty rock bucket, as the strongest one in four basic buckets, is with heel shrouds and wear-resistant balls for best protection.	With greater wear-resistance and strength than the buckets above, HD rock bucket suits the most extreme construction conditions and owns the longest service life of a few years.	Suitable for the heaviest working conditions in rocky types of soil and demolition work. Optimal shape to effortlessly pick up large rocks. Very robust and extremely strong design with the most durable steel. Despite extreme breakout forces, it is wear resistant.

Application :

Include light and general construction, road and rail construction as well as quarrying and mining industries.



► Mud Bucket

Features :

Possessing all the features of Clean Up Bucket, except with larger capacity; A tougher cutting edge can be added on request.



Mud Bucket					
Size	Model	Pin Diameter (mm)	Bucket Width (mm)	Capacity(m ³)	Weight(kgs)
1-2T	PHMB-MINI	<35	900	0.1	94
3-4T	PHMB-03	40	1200	0.16	184
5-7T	PHMB-05	45	1200	0.2	220
8-11T	PHMB-08	50/55	1500	0.33	297
12-18T	PHMB-15-A	60/65/70	1500	0.6	478
			1800	0.75	522
	PHMB-15-B		1500	0.72	676
			1800	0.8	750
19-24T	PHMB-20-A	80	1800	0.91	842
			2000	1.09	910
	PHMB-20-B		1800	1.17	1150
			2000	1.35	1214
25-30T	PHMB-25	90	2000	1.46	1276
30-38T	PHMB-30	90/100/110	2000	1.64	1600
			2200	1.9	1760
40-50T	PHMB-45	110/120	2200	2.4	2545

Applications:

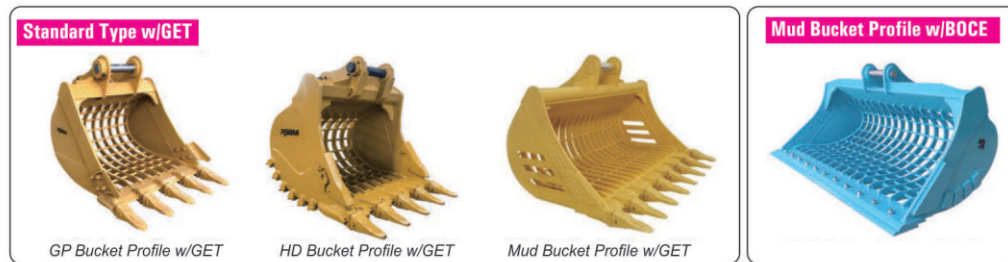
Surface trimming of slopes, dredging of riverbeds and ditches, etc. where larger bucket capacity is required.



► Skeleton Bucket

A modified bucket with its main loading part separated by gaps to allow larger chunks of substance to fall through, avoiding wasting time moving unnecessary materials away. It's also known as screening buckets, shaker buckets, sifting buckets and sort buckets (or sorting buckets).

Phoenix can supply for two types skeleton bucket, Standard Type w/GET and Mud Bucket Profile w/BOCE.



GET:ground engaging tools. BOCE:bolt on cutting edge. HD:heavy duty.

Features :

1. The size or grids inside could be customized into the ideal space of customers.
2. Attachments for configuration, for example, lip protector and wear -resistant balls, could be attached on for strength.
3. It could be customized into the type without teeth due to customers' require.

Application :

Skeleton bucket is widely applied to loosen materials in governmental, agricultural, forestry and water conservancy projects.



► Trenching Bucket

Description of the goods :

Variety of widths and shapes.

High efficiency for one-time shaped work.



Application :

For digging trenches in soil, sand, clay and other light to medium materials, such as rivers, ponds and ditches.

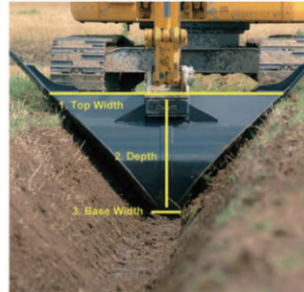


➤ Trapezoid Bucket

Trapezoidal bucket, also known as V-ditch bucket or V bucket, is named by the design which features a trapezoidal appearance.

Characteristic :

- 1) Both blade (single or double) type and teeth type could be made for different needs.
- 2) The unique appearance, whose upper width is much longer than down width, allows the trench or channel to be in appropriate size and straight shape



Application :

Mainly applied in forming ditches in wide fields, such as waterways and roadways in government projects and forestry.



➤ Tilting Bucket

Features:

1. It can stand on ground and the bottom is flat.
2. Spill guard and cylinder guards to protect the cylinder rod and hose fittings.
3. Reversible bolt-on cutting edge.
4. Corrosion resistant high tensile pivot pins and hard inserts.
5. Dual mechanical stops to extend cylinder life.
6. Design of hoses is reasonable or can be customized.



Optional:

1. Fitted with Flow Control Valves for easy adjustment of tilting speed.
2. Quick coupling.

Tilting Bucket				
Size	Model	Pin Diameter (mm)	Bucket Width (mm)	Weight(kgs)
<3T	HTBMINI-900	<35	900	133
	PHHTB-MINI-1000		1000	161
3T	HTB03-1000	40	1000	176
	PHHTB-03-1200		1200	238
5T	PHHTB-05-1200	45/50	1200	284
	HTB05-1400		1400	290
	ESHTB-05-1500		1500	310
6-8T	PHHTB-08-1200	50/55	1200	395
	HTB08-1400		1400	410
	PHHTB-08-1500		1500	408
	HTB08-1600		1600	418
10-18T	PHHTB-12-1500	60/70	1550	620
	PHHTB-12-1800		1800	680
19-23T	PHHTB-20-1800	80	1800	1280
	PHHTB-20-2000		2000	1350
25-30T	PHHTB-25-2000	90	2000	1416
	PHHTB-30-2000		2200	2100

Application:

Standard ditching and grading to backfilling and light material loading and handling.

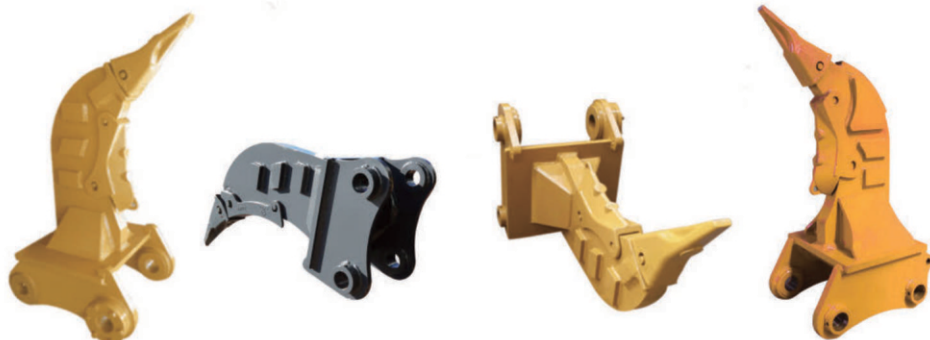


► Ripper

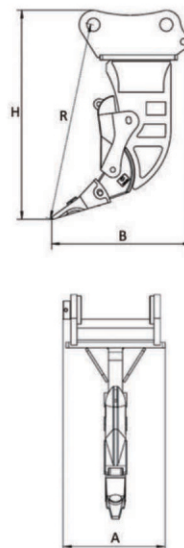
Features :

Generally with one single tooth, could be two or three.

Strong digging and penetrability.

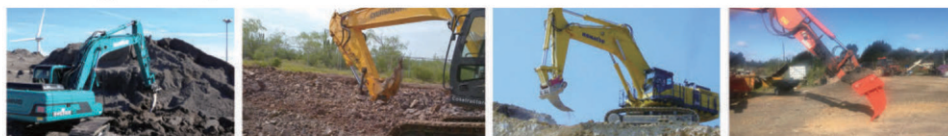


Ripper							
Model	Ton Range	Pin Diameter (mm)	Weight(kg)	Height H(mm)	R(mm)	Length B(mm)	Width A(mm)
PH-R-MINI	1T,2T	<35	45	470	450	320	240
PH-R40	3T-4T	40	55	530	480	360	280
PH-R50	5T-7T	45	85	600	550	410	290
PH-R80	8T-10T	50/55	135	720	642	492	345
PH-R120	11T-17T	60/65/70	288	1065	1030	760	410
PH-R200	18T-22T	80	580	1355	1267	862	533
PH-R250	23-28T	90	620	1406	1306	850	580
PH-R300	29T-38T	90/100	878	1541	1452	930	636
PH-R450	39T-49T	100/110	1080	1650	1515	974	760
PH-R500	50T-69T	120/130	1710	1760	1609	1050	830
PH-R850	70T-100T	130/140	2010	1934	1836	1120	930



Applications:

Breaking of hardpan, sub-hard rock and weathered rock.



► Rake

Rake could function best in pushing and flattening the materials left on ground.

Features:

- Replaceable weld-on wear strips.
- Can be linked with quick coupler.
- Available for any size excavator.
- Various widths available to fit your application.
- Customized sizes and widths are available to meet your needs.



Rake							
Size	Model	Pin Diameter (mm)	Width (mm)	Teeth(pcs)	Teeth Pitch (mm)	Teeth Thickness (mm)	Weight (kg)
1-2T	PHRE-MINI-700	<35	700	6	125	12	72
3-4T	PHRE-03-850	40	850	7	123	14	106
	PHRE-03-1000		1200	8	125	16	162
5-7T	PHRE-05-1100	45	1100	12	132	16	218
	PHRE-05-1200		1200	9	132	16	200
8-11T	PHRE-08-1500	50/55	1500	8	190	20	237
	PHRE-08-1800		1800	11	158	20	305
12-18T	PHRE-12-1800	60/65/70	1800	10	172	25	517
	PHRE-12-1800		1800	11	152	25	587
19-24T	PHRE-20-1800	80	1800	11	130	30	910
	PHRE-20-2000		2000	11	167	30	1030
25-30T	PHRE-25-2200	90	2200	12	160	35	1124
30-38T	PHRE-30-2200	90/100/110	2200	10	200	40	1659
40-50T	PHRE-45-2200	110/120	2200	11	154	50	1928

Application:

Used to sort out debris or heavier material from soil.



- We accept customization.



► Manual Grapple

Characteristic:

Inter locked Webbed Design -Gives greater strength through grapple construction reducing maintenance and replacement costs.

Designed for Safety - Engineered with sensible loading capacity in mind, safety is guaranteed.



Manual Grapple							
Size	Model	Pin Diameter(mm)	Jaw Config	Fixed Jaw Width(mm)	Moving Jaw Width(mm)	Maximum Opening Size(mm)	Weight(kg)
1.5T	PHMG-MINI	<35	2/3	520	303	980	126
3T/4T	PHMG-03	40	2/3	500	320	1292.2	160
5T	PHMG-05	45	2/3	525	315	1330	230
6-8T	PHMG-08	50/55	2/3	650	400	1498	380
10-18T	PHMG-15	60/65/70	2/3	890	520	2044	720
19-24T	PHMG-20	80	2/3	1144	680	2660	1190
25-30T	PHMG-25	90	2/3	1270	735	2961	1260
30-38T	PHMG-30	100/110	2/3	1395	825	2961	1390

Application :

The Mechanical Grapple has been the grapple of choice in the demolition and logging industry for many years due to its robustness and simplicity.



► Hydraulic Grapple

Hydraulic Grab, driven by the excavator bucket cylinder, is an advanced type of grapple controlled by hydraulic system.

Characteristic:

With a large double-acting single hydraulic cylinder safely secured under the excavator quick coupler for absolute protection of the cylinder and rod, it also offers the largest grapple opening in the industry. It provides grappling small, bulky or long objects.



Hydraulic Grapple					
Model	Size	Pin Diameter (mm)	Maximum Opening Size (mm)	Weight	Number of Tines
PHHSHG-MINI-D	<3	<30	542	135	2/3
PHHG03-D	3T	40	810	197	2/3
PHHG05-D	5T	45/50	720	276	2/3
PHHG08-D	6-8T	50/55	1040	400	2/3
PHHG12-D	10-18T	60/70	1200	650	2/3
PHHG20-D	19-23T	80/90	1280	940	2/3
PHHG25-D	25-30T	80/90	1450	1550	2/3
PHHG30-D	30-35T	90/120	1680	2180	2/3



Application:

Hydraulic grapple offers great versatility in grappling applications. Its unique configuration allows ultimate flexibility and uses around worksites, demolition or farms or any project that requires pin point pick-up accuracy.

► Hydraulic Rotating Grapple

Main features:

- 1) NM400 steel, light weight and wear-resistant.
- 2) The pin is made of 42CrMo alloy steel, with built-in oil passage, high strength and good toughness; Rotary motor imported from Switzerland.
- 3) Use vertical car motor rotation system, 360° rotation, with car brake function;
- 4) The oil cylinder adopts honing tube, imported HALLITE oil seal, short working cycle and long life.
- 5) The teeth are made of manganese molybdenum alloy material, which is durable.



Hydraulic Rotating Grapple						
Model	PHHRG2A	PHHRG4A	PHHRG6A	PHHRG8A	PHHRG10A	PHHRG14A
Suitable Excavator (ton)	4-6	7-11	12-16	17-23	24-30	31-40
Weight (kg)	360	440	900	1850	2130	2600
Max Jaw Opening (mm)	1200	1400	1600	2100	2500	2800
Working Pressure (bar)	110-140	120-160	150-170	160-180	160-180	180-200
Set Up Pressure (bar)	170	180	190	200	210	250
Working Flow (lpm)	30-55	50-100	90-110	100-140	130-170	200-250
Cylinder Volume (ton)	4.0*2	4.5*2	8.0*2	9.7*2	12*2	12*2

Applicable objects:

Simple soil loosening, cleaning debris, loading and unloading.

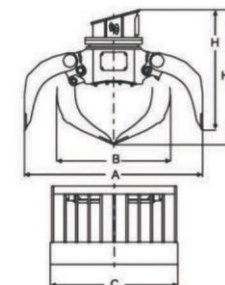


► Sorting Grab

Main features:

- 1) Using Q345 manganese plate steel, high strength and corrosion resistance.
- 2) The pin is made of 42CrMo alloy steel, with built-in oil passage, high strength and good toughness.
- 3) Rotary motor imported from Switzerland.
- 4) The oil cylinder adopts honing tube, imported HALLITE oil seal, short working cycle and long life.

Sorting Grab				
Model	PHCS04	PHCS06	PHCS06	PHCS10
Suitable Excavator (ton)	6-12	12-18	18-25	25-32
Weight (kg)	470	1050	2000	2300
Operating Capacity (m ³)	0.60	0.60	0.80	1.00
A (mm)	1730	2175	2700	3300
B (mm)	960	1200	1500	1880
C (mm)	595	745	935	1160
H (mm)	1350	1700	2100	2650
H1 (mm)	1570	1970	2400	3080
Driving Pressure (bar)	300	300	300	300
Driving Flow (bar)	180-230	180-230	200-250	250-300
Rotating Motor	Set up Pressure (bar)	120	120	120
	Motor Flow (lpm)	30	30	30
	Frequency (r/min)	16-18	16-18	16-18



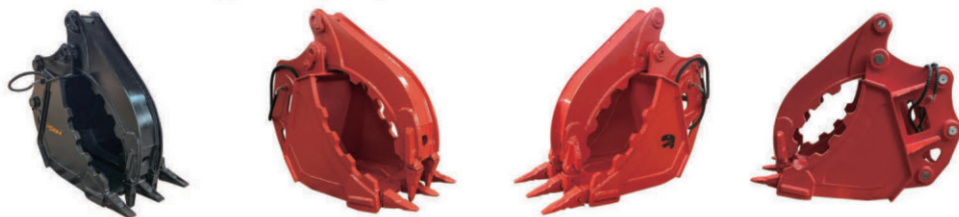
Applicable object : all kinds of large-scale, bulk materials loading and unloading or handling operations.



► Hydraulic Grab Bucket

Characteristic :

Connected with a hinge, the 2 parts could create a jaw-like function which makes sure that the materials could be held tightly and moved away in a most efficient and energy-saving way.



Hydraulic Grab Bucket						
Model	Size	Diameter of Bucket Pins(mm)	Width(mm)	Opening Size(mm)	Work Pressure(MPa)	Flow(l/min)
PHHGB-MINI	<2T	<35	270	670	10--13	25--40
PHHGB-03-300	3-4T	40	305	750	11--14	30--55
PHHGB-05-450	5-6T	45	458	1200	11--14	30--55
PHHGB-08-600	6-9T	55	600	1365	12--16	50--100
PHHGB-12-600	10-18T	60/65/70	600	1680	15--17	90--110
PHHGB-20	19-26T	80	800	1990	16--18	100--140
PHHGB-30	27-35T	90/100	1100	2500	16--18	130--180

Applications:

Excavator grab bucket has been widely used in ports, steel plants, power stations, ships and garbage treatment plants.



We also can make customized hydraulic grab bucket for you



► Screening Bucket

As the name tells, this type of bucket combines screening (which refers to the grids inside) and rotating (due to the drum shaped).

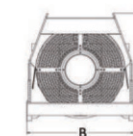
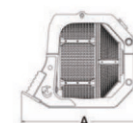


Characteristic:

1. The space of grids could be adjusted into 10*10mm for minimum and 30*150mm for maximum.
2. The screening drum design, featured with rotary, allows the bucket to rotate in high speed so to sieve the unnecessary substances outside.



Screening Bucket							
Specification	Model	PHRSB-03	PHRSB-06	PHRSB-12	PHRSB-20	PHRSB-25	PHRSB-30
Size(Ton)		3-5T	6-8T	10-16T	18-23T	25-29T	30-36T
Outer Measurement(Ax*BxC)		930*690*679	1127*880*853	1575*1200*1200	1940*1400*1415	2295*1870*1875	2930*2320*2380
Weight(kg)		230	340	830	1270	2250	3945
Mesh Diameter*Height		610*450	880*640	1000*780	1140*1015	1540*1180	1940*1590
Speed(min/r)		0-35	0-35	0-35	0-35	0-35	0-35
Capacity(m ³)		0.13	0.22	0.62	1.2	2.4	4.7
Oil Flow(L)		40	40	65	65	65	160
Max Pressure(Mpa)		30	30	30	30	30	30



Application :

Generally it's for sifting, so it could be applied in these fields - (included but not limited to) channel and waterways - basically it's for all environment that requires primary screening.



► Drum Compaction Wheel

As shown in the name, it's for compacting dirt into trenches to create a firm surface. The drum type is named for its similarity to a drum with pad feet.

Characteristic:

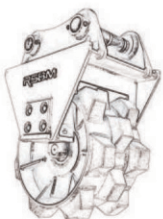
The design of drum avoids power lost due to material penetration caused by the over depth of material during work.



Compaction Wheel

Model	Pin Diameter (mm)	Width (mm)	RIM Diameter(mm)	Weight(kg)
PHCM-MINI	<35	200	280	90
PHCM-03	40	300	582	256
PHCM-05	45	300	582	256
PHCM-08	50/55	380	582	300
PHCM-15	60/65/70	450	600	460
PHCM-20	80	460	763	810
PHCM-25	90	600	900	1210
PHCM-30	100/110	600	900	1210

Application : Suitable in open spaces as darns, highways, etc.



► Separated Wheels Compaction Wheel

An attachment that with three separated wheels welded on for compacting dirt into ground as drum type.

Characteristic:

The tapered design, as the biggest shinning point, plays a significant role in both smooth surface creation and lifting wet and sticky material.



Applied Size:

Wide application for 1 to 50 tons' excavator (Could be larger for customized).

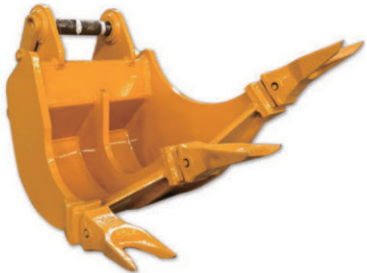
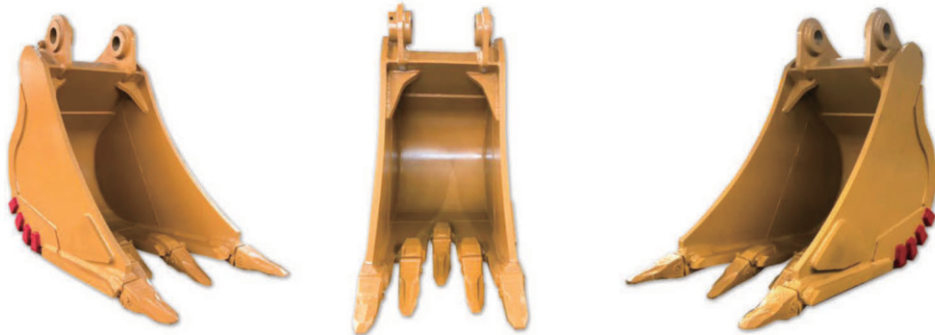


Application : Suitable in open spaces as darns, highways, etc.

► Ripper Bucket

Definition:

It's named of the unique design which combines bucket with shank-ripper to ensure that the excavator is able to finish digging and ripping the same time.



Characteristic:

Of all the highlights, the most noticed one is the convenience. Since its design allows ripping and scooping to function together, materials could be loaded as soon as ripped, so the risk of wet materials absorbed by bucket could be avoided.

Applications :

With special design comes with special application. Ripper bucket is widely used in multiple situation involved in tough material.



► Excavator Thumb

The easiest and fastest way to get more capability from your excavator is to install an Excavator Thumb. With an Excavator Thumb, your excavator goes from digging to complete material handling. An Excavator Thumb makes it easier to pick, hold and move awkward material such as rocks, concrete, branches, and debris that does not fit into the bucket.

Phoenix Attachments offer two types of Excavator thumb, manual and hydraulic thumb. And three types for hydraulic thumb, pin on, weld on and progressive thumb.

This guide will help you understand the differences and decide which is right for you.

Manual Thumb



Hydraulic Thumb



Weld-on Thumb



Pin-on Thumb



Progressive Thumb



► Manual Thumb

The mechanical thumb bracket weld on the arm inside, we control the bucket up and down to grab stone or wood. It is more economical than hydraulic thumb and easier to install than hydraulic thumb. It is the best choice for mini or small size excavator.



Features:

- Adjustable, Easy to Install.
- Folds away easily when not in use.
- Self storing stiff arm.
- Fully gusseted for extra strength.

Manual Thumb

Model	Size	Pin Diameter (mm)	Weight(kgs)	Figure Width(mm)	Figure Length(mm)	Number of Figures
PHMT-Mini	1-2.5t	30	51	200	600	2
PHMT-03	3t	35/40	77	200	760	2
PHMT-05	5t	45	92	300	760	2
PHMT-08	8t	50/55	139	300	1000	2
PHMT-12	12t	60/70	295	450	1200	3
PHMT-20	20t	80	443	600	1450	4
PHMT-25	25t	90	636	760	1575	4
PHMT-30	30t	100/110	999	760	1778	4

Application :

Pick, hold and move awkward material such as rocks, concrete, branches and debris that does not fit into the bucket.



► Weld-on Hydraulic Thumb

It is available in a wide variety of sizes to meet any demand. The back plate welds onto your excavator's dipper stick and has multiple positions for the stiff arm to give you the best grip on whatever material you are working with. When not in use, the stiff arm or cylinder can be removed and the claw will sit against the dipper stick out of the way.



Features:

- Welds onto any excavator.
- Adjustable, Easy to Install.
- Available for any pick up size for your excavator.
- Link with rakes, mud buckets, digging buckets, rippers, splitters etc.

Weld-on Hydraulic Thumb

Model	Size	Pin Diameter (mm)	Weight(kgs)	Figure Width(mm)	Figure Length(mm)	Number of Figures
PHHTW-Mini	1-2.5t	30	61	200	550	2
PHHTW-03	3t	35	64	200	600	2
		40	72	200	780	2
PHHTW-05	5t	45	107	250	900	2
PHHTW-08	8t	50	135	300	1015	2
		55	149	300	1150	2
PHHTW-12	12t	60	247	450	1200	2
		70	294	450	1250	3
PHHTW-20	20t	80	462	600	1450	4
PHHTW-25	25t	90	565	760	1575	4
PHHTW-30	30t	100/110	670	760	1778	4

Application :

Pick, hold and move awkward rocks, concrete, branches, and debris that does not fit into the bucket.



➤ Pin-on Hydraulic Thumb

Pin on thumb is a customized product specifically for your bucket in use. It can be linked with your quick hitch or bucket to achieve the pin-on function. The tines of thumb can be customized according to the teeth number and width of your bucket. In order to achieve perfect co-work with your bucket.

For example, your bucket with 5 teeth, width 1060mm, pin on thumb can be customized for you into 4 teeth, 760mm width, this can ensure that each thumb's tines are right in the middle of the bucket teeth, effectively preventing materials from spilling.



Pin on the thumb has all the features of the excavator's thumb, but it is more customized than weld on and easier to install than progressives.



Application:

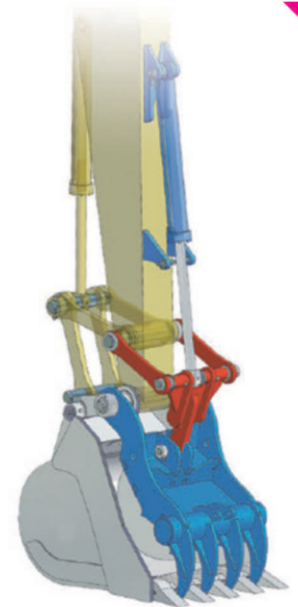
Pick, hold and move awkward material such as rocks, concrete, branches, and debris that does not fit into the bucket.



➤ Hydraulic Progressive Thumb

The Progressive Linkage (Pro-Link) Thumb features a full 180 degrees of rotation making it ideal for handling and manipulating a wide variety of material, debris, rocks, logs and irregular shaped objects.

Each tine has a minimum 3 points of grip to keep materials secure.



Application:

Pick, hold and move awkward material such as rocks, concrete, branches and debris that does not fit into the bucket.



► Slab Bucket

The Slab bucket is designed to maximize machine performance and easily pick up and hold the slabs.



Features:

1. The elongated profile of this bucket is specifically designed for handling and loading large rocks and blocks. The structure is reinforced using wear-resistant material at the critical points, in order to withstand the heavy-duty work for which it is intended to be used.
2. Special protective ribs are welded in place on the inside to protect the bottom of the bucket against being gouged by large rocks.
3. Suit for kinds of excavator, 3t-70t excavator.
4. A model with a delta-shaped blade is also available, which facilitates handling the material.

Applications:

Slab buckets are the tool of choice for the removal of saw cut concrete slabs, pavement slabs and bridge decks.



► Mechanical Pulverizer

Mechanical pulverizer is a type machine that crushes demolished material between one fixed and the other moving jaw to reduce the particle size and to separate iron from other material.

Characteristic:

Demolition pulverizers are constructed from heavy-duty steel that offers durability and strength which could be relied on.



Mechanical Pulverizer			
Size(T)	Model	Opening Size(mm)	Weight(kg)
8-10	PHMP-8	550	600
11-18	PHMP-12	715	907
18-25	PHMP-20	915	1450
	PHMP-20-A	915	1385
26-35	PHMP-35	1050	1880
	PHMP-35-A	1050	1878
40-50	PHMP-45	1200	2275

Application:

With a streamlined design and powerful rotation capability, mechanical pulverizer is the most reliable and effective tool for primary demolition and recycling of reinforced concrete structures.



► Hydraulic Pulverizer

Main features :

- 1) Made of Swedish Hardo x 500 steel, lightweight and wear-resistant.
- 2) The pin is made of 42CrMo alloy steel with high strength and toughness.
- 3) Rotary type uses Swiss imported rotary motor.
- 4) Oil cylinder adopts honing tube, imported HALLITE oil seat, long life.
- 5) The knife block is made of wear-resistant alloy steel, which is resistant to high temperature and deformation.



Hydraulic Pulverizer									
Model	PHH80M	PHH180D	PHH280D	PHH380D	PHH280C	PHH180X	PHH280X	PHH380X	PHH280E
Suitable Excavator (ton)	4-8	9-16	18-30	32-40	18-30	9-16	18-30	32-40	18-30
Weight (kg)	400	800	1600	2100	1600	1100	1900	2500	1600
Opening (mm)	410	570	810	910	880	570	810	910	880
Blade Length (mm)	130	130	230	230	170	130	230	230	170
Height (mm)	1310	1520	2320	2420	2440	1820	2650	2760	2440
Width (mm)	388	388	700	800	500	600	700	800	500
Crushing Force (ton)	40	65	95	120	95	65	95	120	95
Rated Pressure (bar)	260	280	300	320	300	280	300	320	300
Rated Flow (lpm)	140-160	180-200	220-260	220-280	220-260	180-200	220-260	220-280	220-260
Working Pressure (bar)	240	260	280	300	280	260	280	300	280
Rotating Motor Pressure (bar)						90	120	120	120
Rotating Motor Flow (bar)						30-50	40-60	45-70	40-60

Applicable objects:

Demolition operations such as separating reinforced concrete.

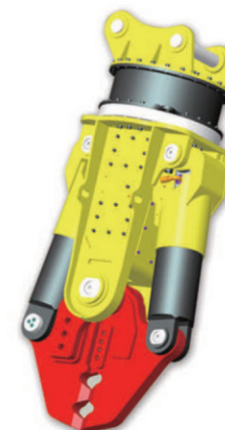


► Hydraulic Shear

Main Features:

- 1) Made of Swedish Hardo x 500 steel, lightweight and wear-resistant .
- 2) The pin is made of 42CrMo alloy steel, with built-in oil passage, high strength and good toughness. Rotary motor adopts Swiss imported motor. full-angle rotation.
- 3) The oil cylinder adopts honing tube, imported HALLITE oil seal, short working cycle and long life.
- 4) The knife block is made of wear-resistant alloy steel. which is resistant to high temperature and deformation.

Hydraulic Shear				
	PH80V	PH180V	PH280V	PH380V
Suitable Excavator (ton)	6-10	12-18	20-30	26-35
Weight (kg)	360	1280	1600	2000
Opening (mm)	390	650	730	810
Blade Length (mm)	100	150	180	180
Height (mm)	1280	1890	2010	2120
Width (mm)	850	1285	1350	1500
Crushing Force (ton)	20	80	100	120
Cutting Force (ton)	50	165	210	260
Driving Pressure (bar)	250	300	300	300
Driving Flow (lpm)	180	230	240	240
Cycle Time	Open (sec)	2.1	2.9	2.9
	Open (sec)	2.7	2.7	2.7



Applicable objects :

Crushing and shearing operations such as building demolition and steel shearing.



► Tree Cutter

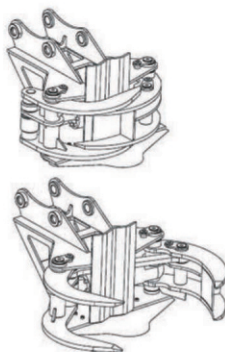
Features:

Large oil cylinder design, high-strength power.

Sharp blade.

High-strength wear-resistant materials so long service life.

Replaceable bolted blades.



Tree Cutter					
Model	Size	Opening Size (mm)	Max Cutting Diameter (mm)	Working Pressure (MPa)	Weight(kgs)
PHTC-06	6-8T	530	150	32	340
PHTC-10	10-14T	820	200	32	850
PHTC-15	15-16T	820	200	32	850

Application:

Forestry tree hydraulic cutting and related work.



► Stump Shear

Stump Shears are ideal for removing and cutting through large tree stumps, as well as splitting trees lengthwise on the ground.

The mechanical model requires no additional hydraulics. Pinning on in place of the bucket, it utilizes the excavators bucket cylinder to power the single blade jaw through the tree stump.



The shear's outer jaw has two ripper spikes which have oversized replaceable teeth. These prongs are used to pry the stump from the ground while the inner jaw, equipped with a replaceable blade, shears the stump.

Applications:

It is ideal as a downsizing tool for use with tub grinders or other wood processing machines.



► Tree Stumper

The stumper is the ultimate tool for stump removal and land clearing applications. Complete with a dual shank design to remove stumps with a minimal disturbance to the soil. Minimal soil disturbance improves land clearing efficiency by reducing filling and grading.



Description:

- Slice lateral roots with minimum soil disturbance.
- Twin rippers deliver slice and move capability.
- Sharp front hooks split and lift.
- Satisfaction guaranteed.
- One Year Warranty.
- Competitive Price.



Application :

stump removal and land clearing.



► Hydraulic Quick Hitch

Main features:

- 1) Using Q345 manganese plate steel. high strength and corrosion resistance.
- 2) The pin is made of 42CrMo alloy steel with high strength and toughness.
- 3) The oil cylinder adopts honing tube, imported HALLITE oil seal, short working cycle and long life; Removable tiger mouth spring disc protection design, bold design of safety pin, safe and reliable.



Hydraulic Quick Hitch							
Model	PHMINI	PH45	PH50/55	PH60/65	PH70/80	PH90	PH100/110
Suitable Excavator (ton)	1.5-4	4-7	5-8	9-19	17-23	23-30	33-45
Weight (kg)	25	50-60	80	120-130	280-290	420-430	450-580
Length (mm)	388	534-545	600	765	924-944	983-1050	1006-1473
Height (mm)	246	307	310	388	492	574	558-610
Width (mm)	175	258-263	270-280	353-436	449-483	543-568	606-663
Pin to Pin Center Distance (mm)	80-150	230-270	290-360	380-420	460-480	473-540	550-620
Forearm Open Width (mm)	80-140	155-170	180-200	232-315	306-340	375-411	416-469
Retractable Distance of Oil Cylinder (mm)	170-206	205-275	340-450	340-486	256-390	413-590	520-590
Top to Bottom Pin Distance (mm)	159	195	195	220	275	300	360
Pin Diameter (mm)	25/40	45/50	50/55	60/70	70/80	80/90	90/120
Working Pressure (bar)	32-40	32-40	32-40	32-40	32-40	32-40	32-40
Working Flow (lpm)	10-20	10-20	10-20	10-20	10-20	10-20	10-20

Applicable object :

Cooperate with various types of excavators to assist quick change operation.



► Mechanical Quick Coupler

Characteristic:

- 1) Mechanical quick coupler allows quicker changing of other attachments (buckets for instance).
- 2) It keeps the machine functioning in better way.



Application :

Quick couplers could be applied in excavators which might be used in a great variety of fields.

► Hydraulic Tilt Quick Coupler

Hydraulic tilt quick hitch, which is the more enhanced type than hydraulic one, is with a tilting system which provides 45 degrees tilting on each side.

Characteristic:

With the tilting quick coupler which provides the ability to tilt the bucket up to 90 degrees in total (45 degrees on each side), the whole construction progress will be convenient and energy-saving.



Application :

Whether for site development, setting underground utilities or clearing ditches, the powerful tilting coupler for excavator and other equipment is a versatile tool which will increase the productivity for over 50%.

► Side Type Hydraulic Breaker

An excavator device with advanced technology for rock and concrete demolishing.



Characteristic:

Firstly, it's with better flexibility for accomplishing different projects such as road demolition.

Secondly, its lower installation point allows higher lifting.



Side Type Hydraulic Breaker

Model	PHB100S	PHB200S	PHB300S	PHB400S	PHB600S	PHB800S	PHB900S	PHB1600S	PHB1900S	PHB3500S	PHB4500S	PHB5000S	PHB5500S	PHB6000S	PHB6500S
Weight (kg)	105	105	105	105	105	105	105	105	105	105	105	105	105	105	6200
Length (mm)	900	1100	1200	1347	1528	1920	2260	2695	2810	3152	3310	3400	3400	3420	3700
Pressure (bar)	90-120	90-120	90-120	110-140	110-160	120-170	150-170	160-180	160-180	160-180	160-180	160-180	180-220	200-240	200-240
Flow (lpm)	15-25	20-40	25-50	40-70	50-90	60-100	80-120	120-160	130-170	170-220	200-300	210-290	220-300	230-320	360-450
Rate (bpm)	900-1400	700-1200	600-1100	500-900	500-800	400-700	400-700	400-700	400-600	250-400	250-350	200-350	200-250	150-200	150-200
Hose (inch)	1/2	1/2	1/2	1/2	1/2	3/4	3/4	1	1	1	1 1/4	1 1/4	1 1/4	1 1/4	1 1/4
Chisel (mm)	40	45	53	68/70	75	85	100	135	140	155	165	175	185	195	205
Suit (ton)	0.8-2.0	1.2-3.0	2.5-4.5	4-7	6-9	7-14	11-16	19-26	19-26	28-40	36-45	40-55	50-60	55-65	65-100

Application:

Based on rocks-breaking, breakers could be applied into any environment that requires, such as demolition, construction and deconstruction.



► Top-type & Box-type Hydraulic Breaker

An excavator device with vertically design for rock and concrete demolishing.

Characteristic :

Firstly,it reaches rock or concrete vertically which helps breaking quarry materials.

Secondly,the design provides wider working space.



Top-type Hydraulic Breaker



An excavator device with special silent structure for lowering noises.

Characteristic:

Box type, aka silent type, won't make much noise during works, Therefore, for certain situation that requires silence, box type breaker will be a great assistance.



Top-type & Box-type Hydraulic Breaker														
Model	PHB100	PHB200	PHB300	PHB400	PHB600	PHB800	PHB900	PHB1600	PHB1900	PHB3500	PHB4500	PHB5000	PHB5500	PHB6000
Top Type Weight (kg)	85	140	160	355	440	640	900	1800	1970	2850	3160	4120	4800	5300
Box Type Weight (kg)	167	194	363	450	640	730	970	1950	2050	3000	3300	4250	4900	5400
Length (mm)	1000	1300	1400	1700	1750	2100	2400	2700	2860	3100	3286	3800	3700	4200
Pressure(bar)	90-120	90-120	90-120	110-140	110-160	120-170	150-170	160-180	160-180	160-180	160-180	160-180	180-220	200-240
Flow(lpm)	15-25	20-40	25-50	40-70	50-90	60-100	80-120	120-160	130-170	170-220	200-300	210-290	220-300	230-320
Rate(bmp)	900-1400	700-1200	600-1100	500-900	500-800	400-700	400-700	400-700	400-600	250-400	250-350	200-350	200-250	150-200
Hose (inch)	½	½	½	½	½	¾	¾	1	1	1	1¼	1¼	1¼	1¼
Chisel (mm)	40	45	53	68/70	75	85	100	135	140	155	165	175	185	195
Suit (ton)	0.8-2.0	1.2-3.0	2.5-4.5	4-7	6-9	7-14	11-16	19-26	19-26	28-40	36-45	40-55	50-60	55-65

Application:

Based on rocks-breaking, breakers could be applied into any environment that requires, such as demolition, construction and deconstruction.

► Orange Peel Grapple

Main features:

- 1) NMSOO steel, light weight and wear-resistant.
- 2) The pin is made of 42CrMo alloy steel,with built-in oil passage, high strength and good toughness.
- 3) Rotary motor imported from Switzerland, vertical car motor rotation system, 360° rotation, car brake function.



Orange Peel Grapple					
Model	PHO04A	PHO06A	PHO08A	PHO06B	PHO08B
No.of Jaw (Piece)	4/5	4/5	4/5	4/5	4/5
Suitable Excavator (ton)	6-9	10-17	18-25	10-17	18-25
Weight (kg)	355/420	900/1000	1650/1900	850/1000	1700/1950
Mac Open Jaw (mm)	1200	1600	2050	1900	2500
Height of Opened Grapple (mm)	1000	1500	1700	1550	2000
Working Pressure(bar)	200	260	320	260	320
Working Flow (lpm)	50-100	60-120	200-250	60-120	200-250
Capacity (m ³)	0.3	0.4	0.8	0.5	1

Applicable objects : Loading, unloading and handing of bulk stone, steel, wood and other materials.



► Clamshell Bucket

Main Features :

- 1) Nm500 wear-resistant steel, high strength and wear resistance.
- 2) The pin is made of 42CrMo alloy steel, using heat treatment technology, built-in oil passage, high strength and good toughness.
- 3) Double-cylinder connecting rod design, using honing tube, imported HALLITE oil seal, short working cycle, long life and flexible operation.



Clamshell Bucket				
Model	PHCS04	PHCS06	PHCS08	PHCS10
Suitable Excavator (ton)	7-11	12-18	18-25	26-35
Weight (kg)	800	1200	2000	2300
Opening (mm)	1000	1500	2200	2300
Working Pressure(bar)	180	210	250	250
Set up Pressure (bar)	250	290	320	340
Working Flow (lpm)	190	210	220	240



Applicable object : loading and unloading of broken and sandy materials in bulk.



► Hydraulic Compactor

Main Features :

- 1) Using Q345 manganese plate steel, high strength and corrosion resistance.
- 2) The pin is made of 42CrMo alloy steel, with built-in oil passage, high strength and good toughness.
- 3) The motor uses a hydraulic vibration motor imported from the United States, which is sturdy and durable.
- 4) Bearings use German imported FAG bearings, low noise, safe and reliable.
- 5) The shock absorber adopts Korean Autox, which has good toughness and fatigue resistance.

Hydraulic Compactor					
Model	PHC02	PHC04	PHC06	PHC08	PHC10
Suitable Excavator (ton)	2-3	4-9	10-16	17-23	24-30
Power of Impulse (ton)	3	5	10	15	15
Maximum Vibration Frequency (r/min)	1800	1800	1800	1800	1800
Working Flow (lpm)	25-40	45-75	85-105	120-170	120-170
Working Pressure (bar)	100-130	100-130	100-130	120-180	120-180
Weight (kg)	110	300	500	900	950
Bottom Measurement (L*W,mm)	650*470	825*550	862*700	1100*900	1100*900
Height (mm)	600	760	920	1060	1100
Width (mm)	410	550	700	900	900



Applicable objects : Ramming, ramming, piling and crushing of trenches, slopes, steps and complex terrains.



► Pile Hammer

Main features:

- 1) Using Q345 manganese plate steel, high strength and corrosion resistance.
- 2) The pin is made of 42CrMo alloy steel, with built-in oil passage, high strength and good toughness; Rotary motor adopts Swiss imported motor.
- 3) The oil seal adopts the oil seal imported from Eaton in the United States to extend the service life.
- 4) The shock absorber adopts Korean Autox, with good toughness and fatigue resistance.
- 5) Integrated design, safe and stable, low failure rate.



Pile Hammer						
Model		PHC02	PHC04	PHC06	PHC08	PHC10
Suitable Excavator (ton)		12-17	18-25	30-40	40-50	40-65
Eccentric Moment (Nm)		32	36	50	65	85
Frequency (rpm)		2500	2800	2800	2800	2800
Centrifugal Force (kN)		172	265	420	580	750
Working Pressure (bar)		300	300	320	320	320
Working Flow (lpm)		120	155	168	210	255
Max Turning (degree)		180	180	180	180	180
Weight	Main Body (kg)	1300	1900	2650	2900	3000
	Extension Boom (kg)	260	400	650	650	650
	Total Weight (kg)	1560	2300	3300	3550	3650

Applicable objects: various types of pipe, steel plate, etc.



► Excavator Magnet Lift

Electro magnet truck, following the electromagnetic principle, is a device that could contact metal materials on earth and demagnetize them to achieve removing.



Characteristic:

- 1) The electromagnetic principle inside guides the truck itself to load and unload as needed.
- 2) The magnetic force, produced by electrifying the internal coil, comes into play through the panel on bottom. Because of the great convenience, this type of magnet truck could be a great help in reducing the trouble of moving unnecessary pieces away.

Excavator Magnet Lift							
Model	PHEM900	PHEM1000	PHEM1100	PHEM1200	PHEM1300	PHEM1500	PHEM1650
Weight (kg)	734	922	1010	1212	1558	1982	2418
Dimension	A (mm)	900	1000	1100	1200	1300	1500
	B (mm)	275	275	275	275	275	275
Capacity	Iron Palte (kg)	4500	5500	6500	7500	8500	11000
	Waste Steel (kg)	600	800	1000	1300	1400	1900
	Waste Iron (kg)	200	300	400	600	800	1000
Electric Current (A)	26.8	31	35	45.5	54.5	70.9	75
Electric Powe (kw)	5.9	6.2	7.7	10	12	15.6	16.5
Suitable Eacavator (ton)	10.0-15	18-25	18-25	18-25	27-30	32-45	47-50



Application:

It's designed for lifting metals as steel scrap, steel ball and cast ingots. Therefore, it's generally used in a great variety of construction duties

► Standard Boom & Arm

Standard boom and arm, as it shown in the name, is a significant device composed of a boom and an arm for connection between the controlling pump and attachment.



Characteristic:

- 1) For works with a distance couldn't reached by a single bucket, the set of boom and arm could be a great help.
- 2) There're 3 sets of cylinders respectively connect the pump to boom, the boom to arm and arm to bucket.

Standard Boom & Arm						
Models	Total Length of Boom&Arm (mm)	Weight (kg)	Bucket Capacity(m³)	Max Digging Height (mm)	Max Digging Depth (mm)	Overall Height (mm)
6T	5935	5300	0.2	5850	3800	2550
12T	7720	12000	0.5	8610	5520	2175
20T	9425	19900	0.8	10000	6620	3040
30T	11100	31200	1.4	10210	7380	3280
35T	11140	33000	1.6	10210	7380	3280
40T	11940	42100	2.0	10925	7790	3400
45T	12040	45125	2.1	10925	7790	3400

Application:

As a necessary device, standard boom and arm attachments is often applied in connection with the excavator itself and the attachment (bucket, for example).



► Long Reach Boom & Arm

Long Reach boom is a set of excavator front-end working device specially designed for long and deep digging and dredging in places as sand, gravel and waterways.

Characteristic:

- 1) With extra length, this long reach set could not only reduce the risk of reaching comparatively dangerous environment but also enhance the efficiency during construction.
- 2) With longer reach comes with stronger adaptability. Long reach set of boom and arm could be operated to lay to some certain places, meeting various construction requirements.

Long Reach Boom & Arm										
Models	Extension Arm(mm)	Extended Bucket Rod (mm)	Transport Height (mm)	Radius (mm)	Maximum Unload Height (mm)	Maximum Digging Height (mm)	Maximum Digging Depth (mm)	Bucket Capacity (m³)	Spare Cylinder Size	Working Weight (kg)
12T	7100	5900	2900	11200	73500	9350	9000	0.3	12T	3000
20T	8220	7160	2980	14500	10390	12510	11340	0.4	20T	4000
25T	8220	7160	3050	14500	10490	12610	11370	0.4	25T	4200
30T	10000	8000	3210	17300	11720	13920	13010	0.4	30T	5200
35T	11000	9000	3210	19200	12920	15120	15000	0.5	35T	6000
40T	12000	10000	3400	21100	14240	16900	16500	0.6	40T	6500
45T	13000	11000	3400	22900	15230	17800	18000	0.6	45T	7000

Demolition Boom							
Models	Total Length for 3 Segments (mm)	Transport Height (mm)	Lifting Transport Height (mm)	Hydraulic Shear Weight limit (kg)	Spare Cylinder Size(T)	Working Weight(kg)	Counter Weight(T)
25T	16000	3160	14900	2000	20T	5000	4
30T	18000	3300	17000	2000	20T	6500	4.5
35T	20000	3300	19000	2000	20T	7000	4.5
40T	22000	3400	21050	2000	22T	7800	5
45T	24000	3400	23100	2000	22T	8500	5

Application:

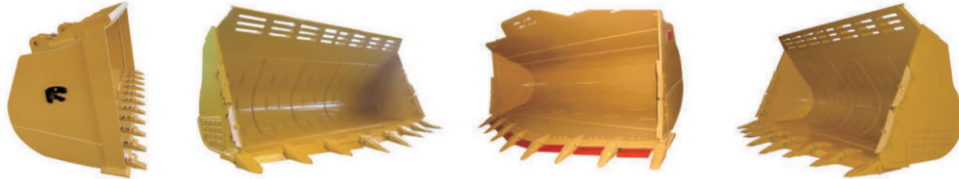
Long boom arm set is widely used in working sites that require long-range controlling excavating, such as forestry and removing.



► Loader Bucket

Features :

Wide and shallow bucket with flat bottom and larger capacity;
Generally with teeth.



Applications:

General digging of clay and
loading of sand, earth, crushed
stone and gravel, etc.



► Loader skeleton bucket



► Loader grapple



► Loader rake



OUR NETWORK : IMPORT & EXPORT



Registered Address :

SAKTHI ENTERPRISES

R.O.No. 38/38, Anna Main Road,
Thirumullaivoyal, Chennai - 600 062

H.O.No. 66, CTH Road, MM Complex,
Thirumullaivoyal, Chennai - 600 062.

Workshop : Plot No.2, Balaji Nagar,
Ambattur O.T., Chennai - 600 053.

Contact No : 044 - 2832001

Mobile : 9962223542 / 06 / 52 / 08 / 02

Email : admin@sakthienterprises.org.in
customercare@sakthienterprises.org.in

Website : sakthienterprises.org.in

Facebook : sakthi hydraulics

Youtube : sakthi hydraulics

CUSTOMER CARE : 9962223506 / 044-42832001